



ALTEBURGER
ELECTRONIC GMBH

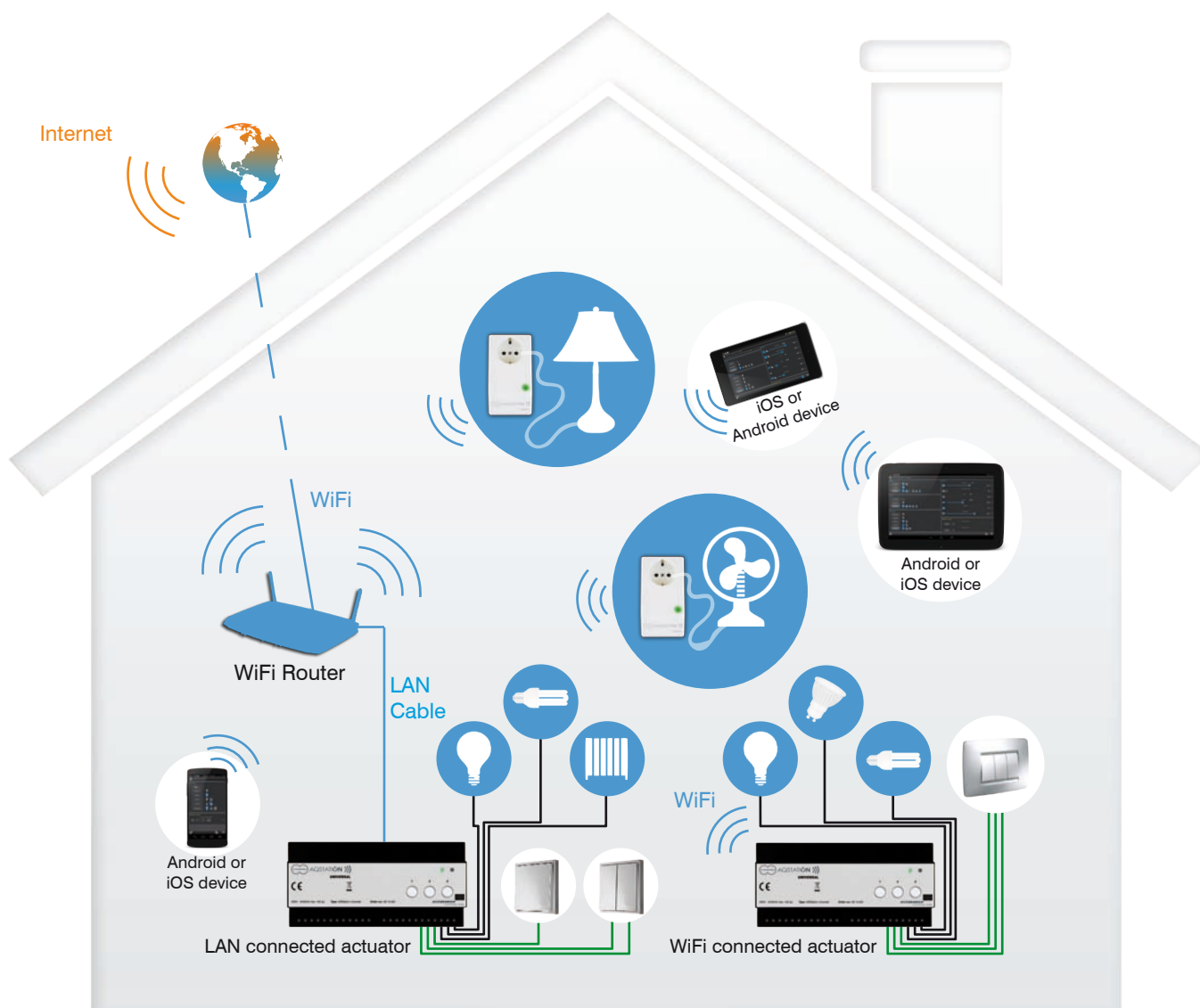
ALTEBURGER
Wi-Fi Lighting Controls



The qualities of ALTENBURGER Wi-Fi Lighting controls:

- A comprehensive lighting control system for all domestic and commercial buildings.
- The pre-programming of up to 50 lighting scenes to be selected in view of the respective situation with smartphone or tablet.
- Fade times from scene to scene individually to be set for any time range.
- Setting of time lapses, intervals, sequences and colour processes.
- Modification of daytimes and nighttimes (e.g. for plant breeding)
- Remote outside lighting controls for gardens, landscapes, lanes and car parks

AQStation System



The components of the Wi-Fi lighting controls:

They are comprising two groups:

- The function devices
- The operating and visualization units

Function devices:

The system comprises 5 different Wi-Fi modules:

1. The AQStation Universal
2. The AQStation Dim 3x 250W
3. The AQStation Switch 3x 10A
4. The mobile AQStation Dim 350W
5. The mobile AQStation Switch 16A

AQStation Universal



The AQStation Universal offers 3 separate controllable outlets with:

- 0-10V interface
- 1-10V interface
- 10A switch outlet, voltage-free

The allocation of the 3 outlets is optional in the sequence as well as in the configuration.

The combination interface of 0-10V/1-10V applies for all load dimmers (0-10V) and interface dimmers (1-10V). The switch outlet serves non-dimmable illuminations, and all kind of electrical and electro-thermic devices.

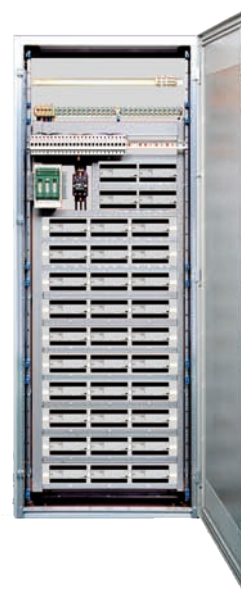
The 0-10V interface of the AQStation Universal is used in combination with load dimmers [e.g. type ALTOQUICK (AQ) dimmer].

In residential areas preferably the phase-interval controlled (trailing edge) type dimmer AQ-0 0,7 KW with a load capacity of 700W is used. It is suitable for:

- Power LEDs (230V)
- High-voltage halogen lamps
- low-voltage halogen lamps with electronic transformers
- incandescent lamps



AQ-0 0,7KW
DIN rail type



DIN rail cabinet with
AQ dimmers

In case of higher loads being required DIN rail dimmers with load capacities up to 2 KW and Thyristor dimmers up to 8 KW are available.



AQStation Universal
with Tablet

The control of AQStation modules not yet having a network connection can be made through pushbuttons so that always a manual control can be maintained. The pushbuttons of the actuators are operating also without network.



The functions for each pushbutton are comprising:

continuous pressing the button:
lighting goes up and down

release of the button:
lighting stops at the respective level

double click:
light level is stored

short click:
lighting switches OFF

Short click again:
Lighting goes into the set light level

Continuous pressure:
Lighting again goes up and down as long as button is hold

The procedure starts from the beginning.



AQStation Dim 3x 250W



While the AQStation Universal works preferably with external load dimmers the AQStation Dim 3x 250W has 3 integrated load dimmers, operating in the phase-interval (trailing edge) mode. Each dimmer has a load capacity of 250W.

The load capacity of 250W per circuit normally is not sufficient for residential areas however as well as for offices, restaurants, conference rooms, training rooms, nurseries, care rooms and many other areas. An LED indicates where lighting burns.



The modules offer numerous possibilities:

- Creation of lighting scenes being adapted to the respective situation, achieved with a programmable dimming control. Any individual lamp or circuit would be assigned to a scene. Each scene gets its fade time of any required length. Floor standing lamps, table lamps and other mobile lamps can be integrated into the system by using mobile AQStation Dim.
- By moving the smartphone or tablet from left to right and vice versa or UP and DOWN the intensity of lighting can be varied.
- The dimmers are operating in the phase-interval (trailing edge) controlled mode and are suitable for high-voltage halogen lamps, low-voltage halogen lamps with electronic transformers, Power-LEDs and incandescent lamps.
- **Any number of AQStation Dim (3x250W) can be switched in parallel. Such any number of lighting circuits can be operated and arranged in new groups or scenes, with fade times, time settings, arrangement of time sequences etc. The non-limited number of modules also makes the control of large areas with numerous lamp circuits like conference rooms, auditoriums, lobbies, multi-purpose halls possible.**

AQStation Switch 3x 10A



The AQStation Switch is a Wi-Fi module with 3x 10A switch outlets. It switches all kind of lamps, suitable electrical and electro-thermic devices.

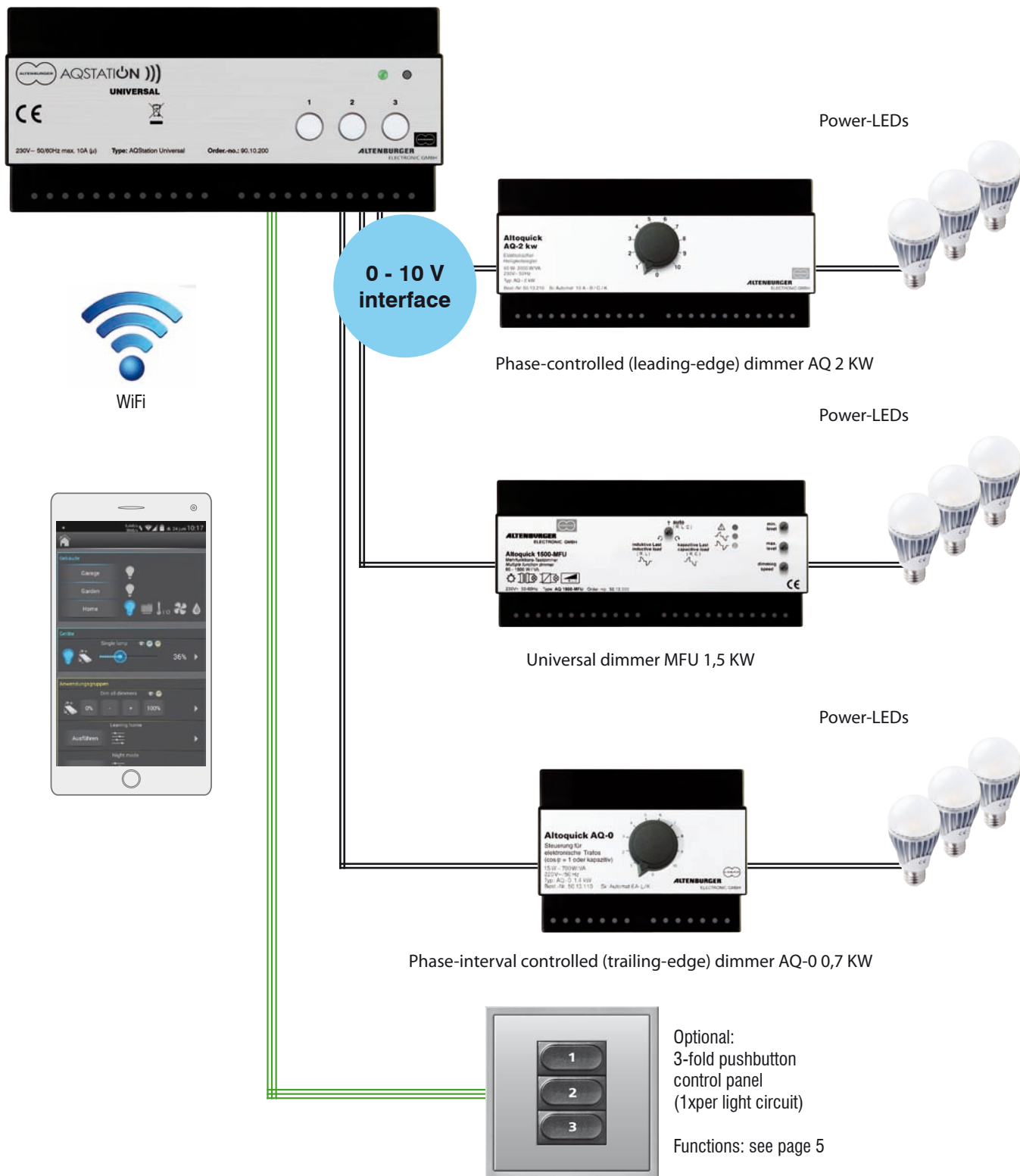
As well as all other AQStations also this device offers time and time interval controls. An LED indicator displays the state of control. With the App numerous switch applications can be achieved.

With the parallel application of additional AQ-Station switch 3x10A nearly any number of operations can be realized.

The switch modules offer – as well as the dim-modules – a replacement of existing conventional circuits through Wi-Fi controls.

System survey - AQSTATION UNIVERSAL in combination with the DIN rail type dimmers ALTOQUICK with load capacities up to 2 KW

for LEDs (230V) high-voltage halogen lamps, low-voltage halogen lamps with electronic transformers, incandescent lamps



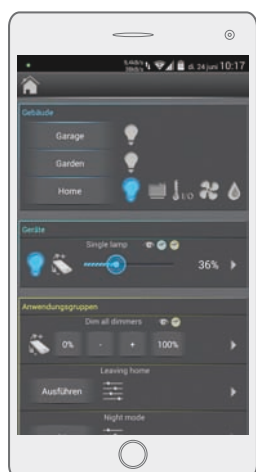
DIN rail dimmers to be combined with the AQStation Universal
Universal dimmer 1,5 KW

Phase-interval controlled dimmer, 0,7 KW,
Phase-interval controlled dimmer, 1,4 KW,
Phase-controlled dimmer, 1,3 KW,
Phase-controlled dimmer, 2 KW,

type AQ 1500-MFU
type AQ-0 0,7 KW
type AQ-0 1,4 KW
type AQ 1,3 KW
type AQ 2 KW

different types being suitable
for all dimmable lamps

Mobile AQStation Dim 350W



The **Mobile AQStation Dim 350W** is the Wi-Fi connection between a socket (230V, 50Hz) and one or more mobile lamps to be connected with their plugs to the Wi-Fi socket or connection plug boards.

The 350W dimmer in the AQStation works in the phase-interval controlled mode (trailing edge mode).

It is suitable for high-voltage halogen lamps, power LEDs, incandescent lamps and low-voltage halogen lamps with electronic transformers.

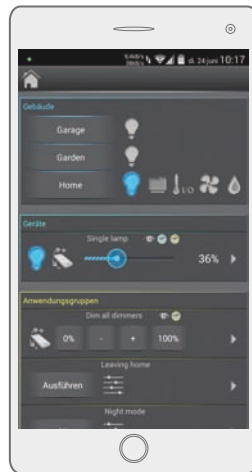
The connected lamps are controlled within the Wi-Fi net with smartphones and tablets. With the respective App and the connection of several AQStations at different sockets and lamps a multitude of lamps can be combined to different lighting scenes.

With a suitable network structure lamps can be controlled in any distance from smartphones or tablets. A feedback indicates the state of control. Time controls are extending the dimmer functions. Through a gradual reduction of the light intensity and different time settings e.g. artificial day-/night intervals with different dawn conditions can be programmed.

Technical Data

Designation	AQStation Dimmer
Type	AQS Dimmer
Order-No.:	Black: 90.00.100 White: 90.00.101
Supply voltage	230V~ 50Hz, DC not allowed
Design	combined socket / plug-in module
Dimensions, weight	WxDxH= 121x66x56mm, approx. 200g
Internal indication	1x LED green (Wi-Fi state) 1x LED green (switch state)
Internal operation parts	1x pushbutton for the manual control (ON/OFF,BRIGHTER/DARKER) 1x pushbutton for reset (factory setting, incl.Wi-Fi)
Wi-Fi	2,4 GHz 802.11n
Operat.temperature	max. 30°C
Power input	< 2W
Protection class	I (electric grounding)
Protection category	IP 20
Degree of contamination	2 (dry not conducting)
Dimmer outlet	350W/VA (max 1,5A~) - electronic current limitation (inrush current-, overload-, short circuit current) - power reduction when exceeding the maximum permissible temperature - switch off at impermissible high temperature (temperature protection, permanent) - switch off at impermissible high current flow (microfusing, permanent) - switch off at impermissible high voltage peaks (inductive load), reclosing after isolation of the supply voltage
Load capacity	max.350W/VA (max.1,6A~) ohmic, capacitive load (incandescent lamps, electronic transformers)
Qualification	CE, RoHS

Mobile AQStation Switch 16A



The **Mobile AQStation Switch 16A** is the Wi-Fi connection between a socket (230V/50Hz) and one or more consumers to be connected with their plugs to the Wi-Fi socket. The consumers may be kitchen equipment, fans, windows, doors and lighting of all kind.

In combination with adequate routers the devices to be controlled can be placed in any distance of the Wi-Fi controllers. A feedback indicates the state of control. Time controls are supplementing the functions.

Technical Data

Designation	AQStation Switch
Type	AQS Switch
Order-No.:	schwarz: 90.00.000 weiß: 90.00.001
Supply voltage	230V~ 50Hz, DC not allowed
Design	combined socket / plug-in module
Dimensions, weight	WxDxH= 121x66x56mm, approx. 200g
Internal indication	1x LED green (Wi-Fi state) 1x LED green (switch state)
Internal operation parts	1x pushbutton for the manual control (ON/OFF) 1x pushbutton for reset (factory setting, incl.Wi-Fi)
Wi-Fi	2,4 GHz 802.11n
Operat.temperature	max. 30°C
Power input	< 2W
Protection class	I (electric grounding)
Protection category	IP 20
Degree of contamination	2 (dry not conducting)
Load contact L' (μ)	internal relay contact (closing contact), internally connected with L
Load capacity	max.16A~ ohmic load
Qualification	CE, RoHS



ALTENBURGER ELECTRONIC GMBH
D-77960 Seelbach/Germany, Schlossweg 5
phone 0049 78 23 / 5 09-0
Telefax 0049 78 23 / 5 09 97
email: info@altenburger.de
www.altenburger.de

Error and technical alterations reserved.
271120140003