

# Multi-Sensors, Type LBS/de, LB/db, LB/dk

The sensors identify movement within a range of approximately 180 ° and a diameter of approx. 7 m at a room height of 3 m. The light sensor is integrated. For the extension of the range of identification the multi-sensor controller type IBMSC-NV can be connected with up to 6 individual multi-sensors (see page 13).

Multi-Sensor / Type LBS/de	Multi-Sensor / Type LB/db	Multi-Sensor / Type LB/dk
----------------------------	---------------------------	---------------------------



### Directions for the use of Multi-Sensors: LBS/de

This sensor can be mounted to lighting fixtures or ceilings with 2 screws on its reverse side.



### Directions for the use of Multi-Sensors: LB/db

This sensor can be mounted to a recessed VDE or BS-1-gang box into the ceiling.



### Directions for the use of Multi-Sensors: LB/dk

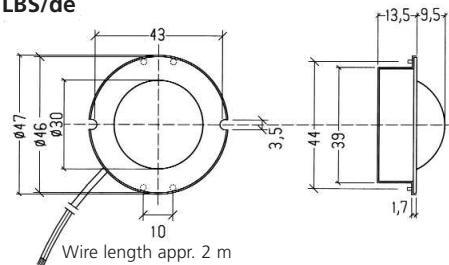
This swivelling sensor is integrated in a recessed downlight housing to be mounted to the ceiling.

## Technical Data

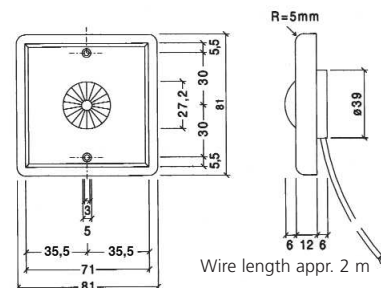
Characterization	Multi-Sensors		
Type	: LBS/de,	LB/db,	LB/dk
Order-no.	: 51.21.033	51.21.038	51.21.039
Operational voltage	: nominal 10V DC (0-20V DC)		
Power consumption	: max. 3mA DC		
Ambient temperature	: 0° ... +50°C		
Range of operation	: up to 400 Lux at the sensor		
Terminals	: green: Vcc (0-20V DC), brown: 0V (frame), yellow: LS (light value output), white: B (motion dependent)		
Wiring to the controller	: see wiring diagram of the controller type IBMSC-NV		
Parallel switching of sensors	: max. 6 Multi-Sensors or individual function 'light' or 'motion'		
Protective class	: II (Protective isolation)		
protective type	: IP 20		
Contamination degree	: 2 (dry, non-conductive)		
Max. wire length	: 100 m		
Dimensions	: according to dimensional drawings		
Housing	: ceiling recessed or to be mounted into lighting fixtures		
Designation	: CE		
CE-requirements	: EMC met acc. to EN 61547 (04/96) : low-voltage acc. to EN 60669-2-1 (02/97)		
<b>Malfunction or destruction of components through wrong wiring!</b>			

## Dimensional Drawings

### Type LBS/de



### Type LB/db



### Type LB/dk

